



DOTEXA

EXTRUSION LINE CONTROL AND SUPERVISION SYSTEM

DOTEXA MANAGER

EXTRUDING LINE INTEGRATED MANAGEMENT SYSTEM

SIMPLE AND EASY MANAGEMENT OF THE EXTRUSION LINE

- Change system operation from a single station.
- Easily and quickly set the operating parameters with precision.
- Recall previously stored settings, ensuring fast line start-up and changeover.
- Print production and consumption reports (optional).
- Monitor the process in real time, with immediate and detailed warning of any faults or malfunction.
- Supply process information needed to validate the manufacturing process as required by quality assurance.
- Network connection to factory supervisor.

COMPLETE CONTROL OF PROCESS FUNCTIONS

- An advanced system designed for maximum operator convenience in managing extrusion process, thanks to the touch screen, DOTEXA supplies an intuitive user interface and makes operating an extrusion line easier than ever.
- Provides a complete monitoring and control of the extrusion process, functions such as: resin loading, materials blending, gravimetric feeding, extrusion pressure and temperature, cooling and calibration, thickness profiling, extruder and takeoff speed, winder and auxiliary equipment (on demand).

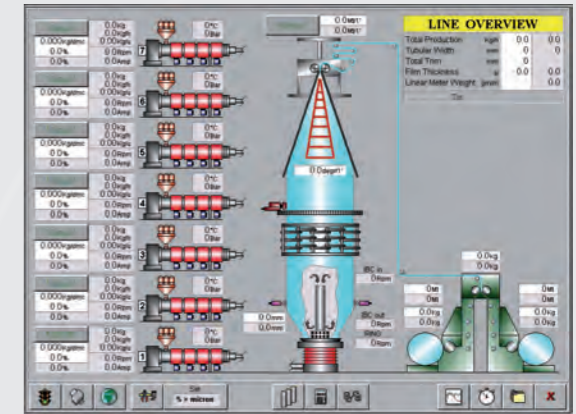
HARDWARE

- Main control cabinet with:
 - Industrial PC 19" SXGA color TFT display with touch screen (resistive)
 - Heavy-duty hard disk drive
 - Master I/O module, CPU x86 100 MHz Intel compatible (supplied if manual line management is required)
 - Operator console for manual line control (supplied if manual line management is required)
- Remote I/O modules from market leader producer, supplied according with system configuration.



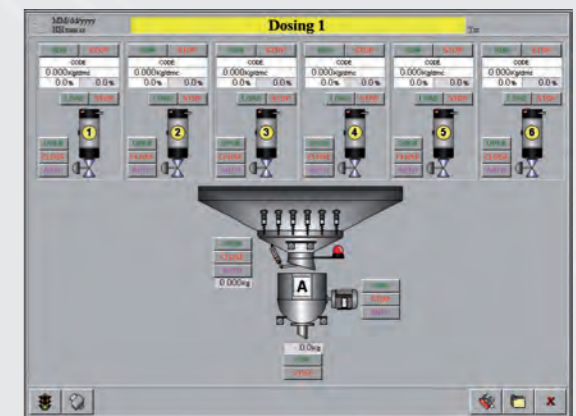
SOFTWARE MODULES AVAILABLE

- Manual line management (remote I/O modules required).
- Resin loading: monitoring and setting. Available loading active control as an option.
- Gravimetric blending: data viewing, data setting, recipe storage.
- Extrusion: data viewing, data setting, recipe storage.
- Resin melting monitoring: setting and monitoring of temperature digital controller (not supplied, serial port required).
- Resin melting control: setting, monitoring and control (PID control algorithms) of all heating and cooling zones (remote I/O modules required).
- Lay flat width interfacing: setting and monitoring of W-SCAN system.
- Internal Bubble Cooling IBC interfacing: setting and monitoring by IBC Control System.
- Cage control system interfacing: setting and monitoring by KALIBRO System.
- Thickness profiling interfacing: viewing of polar and cartesian plots.
- Auto profile: viewing of polar and cartesian plots.
- Alarm and event warning.
- Short term alarm viewing.
- Modem assistance.
- Customer auxiliary equipment interfacing: monitoring.



MANAGEMENT AND INFORMATION SYSTEM

- Management of databases for process parameter storage. Recipes storing, upgrade and download on-the-fly.
- Raw material manager: stored with numerical code and description.
- Blending recipes manager: to create or modify and store blending recipes with numerical code and description.
- Melting profiles manager: to create or modify and store melting profiles with numerical code and description
- Extrusion recipes manager: to create or modify and store extrusion recipes with numerical code and description.
- End product manager: to create or modify coded end products. Each product code is assigned to a blending, extrusion and melting temperature recipes.
- Order manger: to create or modify a list of job orders containing useful data for identifying and tracking each order. Each order is assigned a product code.
- Recording of the quantity of raw material used in the process. Totaling by ingredient.
- Recording of alarm events.
- Statistical process analysis (SPC) for blending and extrusion data.
- Data exporting for further analysis by user programs (Lotus, Excel).



REPORTING

- Inventory report viewing and printout: sorting by product code, job order, recipe and date.
- Quality report viewing and printout: sorting by job order.



DOTEKO SPA

Via E. Mattei, 30
41037 San Martino Spino Modena
ITALY
Phone +39.0535.31653
Fax +39.0535.31727
E-mail doteco@doteco.com
www.doteco.com

DOTEKO LATINO AMÉRICA

Rua Izonzo, 643
Ipiranga 04249-000 São Paulo
BRASIL
Phone +55.11.2948.1454
Fax +55.11.2351.5520
E-mail doteco@doteco.com
www.doteco.com

DOTEKO USA

2450 Abutment Road, Suite 7
Dalton, GA 30721
USA
Phone +1.706.529.8787
Fax +1.706.529.1898
E-mail doteco@doteco.com
www.doteco.com