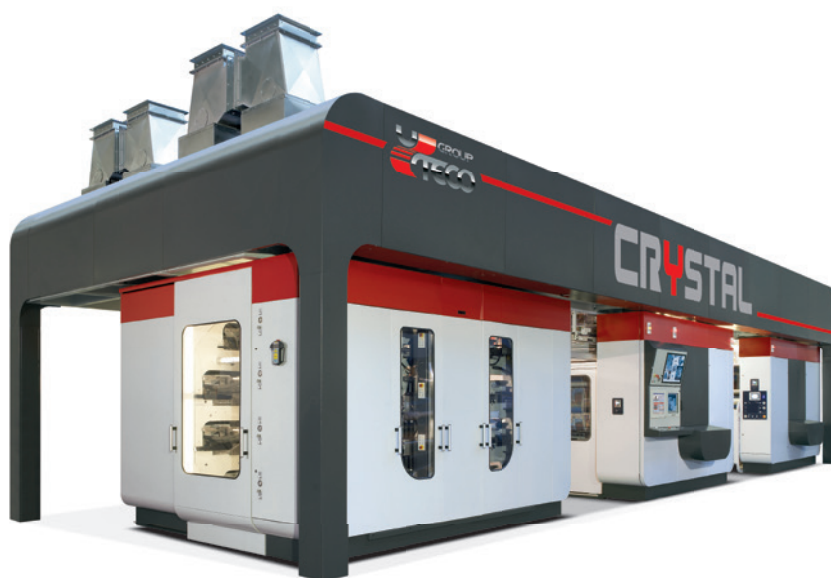


FLEXO PRINTING FOR THE BEST FOOD PACKAGING



CRYSTAL



EXCELLENT QUALITY AND



The standard configuration of the **CRYSTAL** includes front unwinder and rewinder for a better reel handling. The application of a robotic system (supplied on request) is then simplified by this specific design which makes the machine even more compact.

LOW WASTE FLEXO PRINTING



The **CRYSTAL** features a new automatic positioning system for all print decks which improves the stiffness of each printing unit and the precision of its positioning (10 microns). The Printing Group in the standard configuration is supplied with the Flying Deck Make Ready System and is designed to hold a CI drum cleaning device (supplied on request). Several groups of LED lighting grant an unmatched brightness inside the Printing Group.

CRYSTAL

Especially designed to print on food packaging materials the new CRYSTAL is also suitable for various applications requiring a high level of automatism in order to speed up the job changes and to reduce the waste of materials, inks and power consumption. It does feature the **Uteco Direct Drive Evo®** technology which ensures a perfect register accuracy between the colors for the entire press life. Many innovations have been applied on the CRYSTAL:

- New ejection system for plate and anilox sleeve
- Chamber Doctor Blade rotation of 90° for tool-less and on-press blade/ end-seal replacement

- Programmable blade consumption/ maintenance via the press HMI
- Between Color Dryer rotation of 180° for on-press air nozzle inspection
- Optimization of air nozzles geometry by means of a CFD fluid dynamics design
- Automatic adjustment of the drying air flow with respect of the production speed with high efficiency motors + inverters, thus giving noise reduction and energy savings.



The blade and end-seals change can be performed on-press without tools



Rotation of the drying box for easy cleaning of the air blades



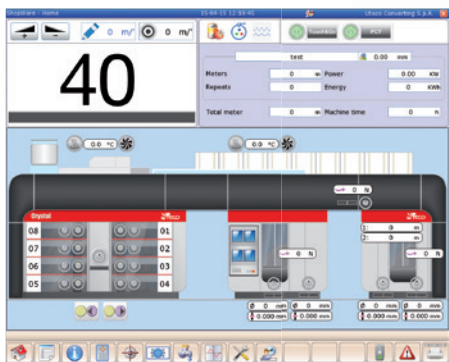
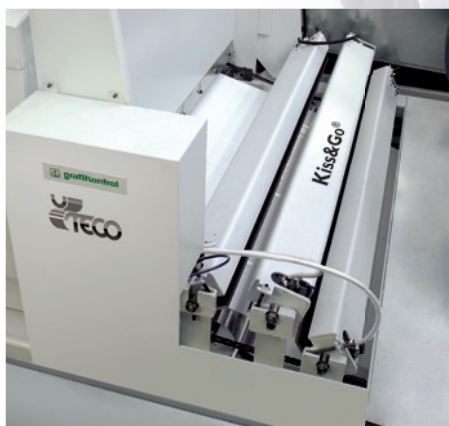
Plate sleeve ejection for fast sleeve change



Anilox sleeve ejection for fast sleeve change

Kiss&Go®

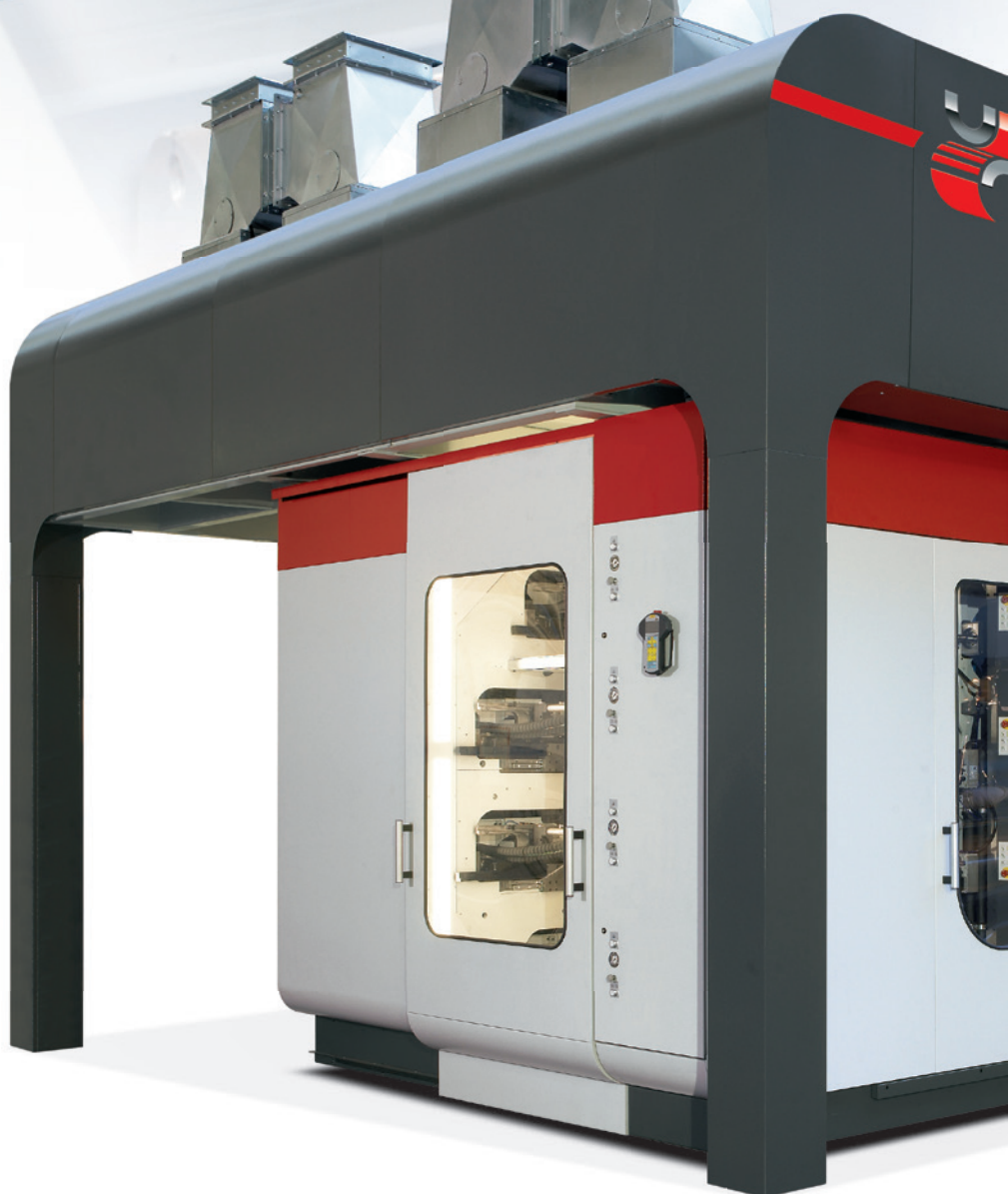
The **Kiss & Go®** is a unique system which sets-up the printing pressures at every new job start-up. By means of a close loop the sensors read the color directly on the printed web and the processing unit automatically adjust the deck position to the best print quality.



The Kiss&Go® relevant page on the press HMI

SmartMatch®

The color matching is very important to further reduce the changeover times. By reading the printed image with a spectrophotometer (on-line or off-line) and comparing it with the reference image, the delta can be transferred to the movable **SmartKitch®**, which will dispense the proper quantity of color correction in a bucket ready for the press operator.



NEW GENERATION

P2P®

Press To Print

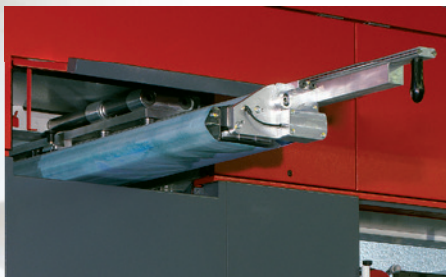
Automatic and dynamic correction of printing pressures during press speed variations. These settings can be individualized per print job and stored in the job recipe of the press supervisor by the operator.

PCT®

Press Control During Transition

New Uteco platform for low waste and fast setting of:

- printing pressures (Touch & Go® + Kiss & Go®)
- registers (Click & Drag®) in partnership with Grafikontrol.

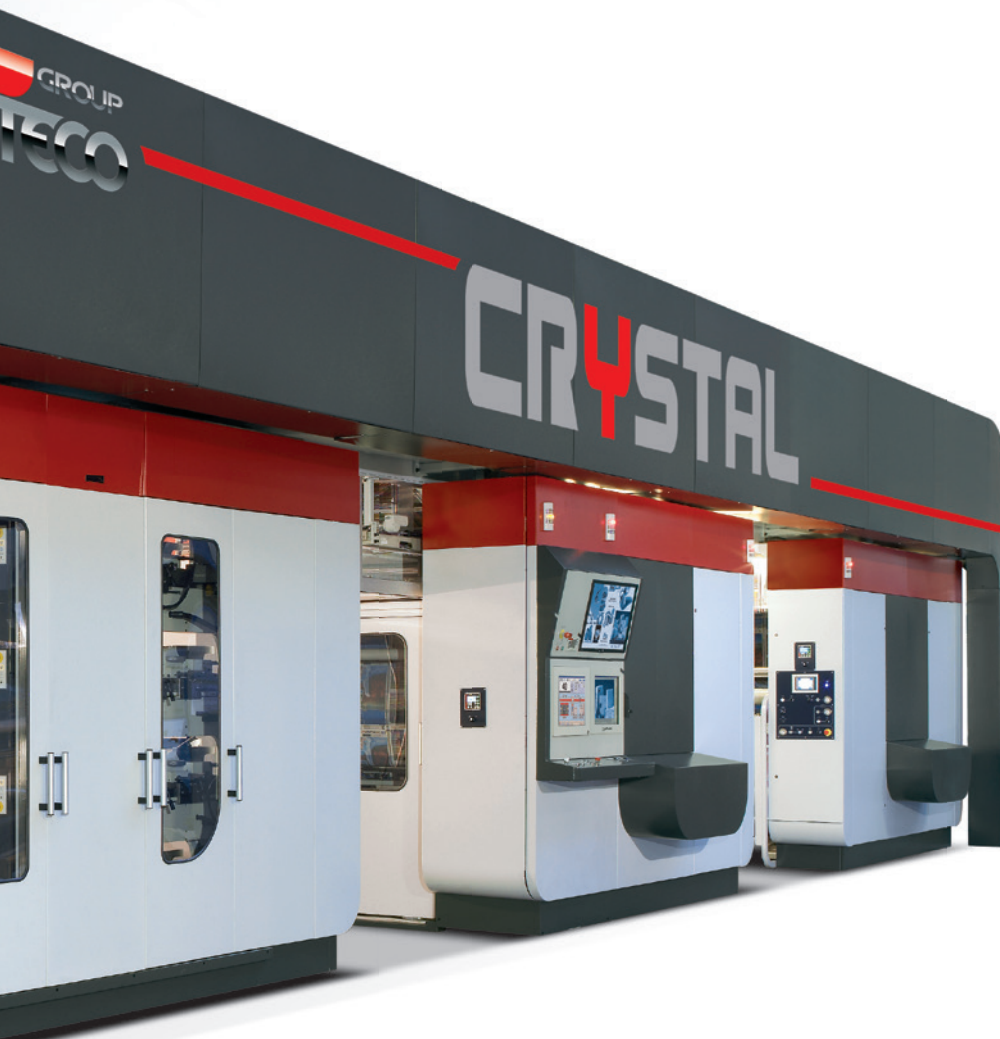
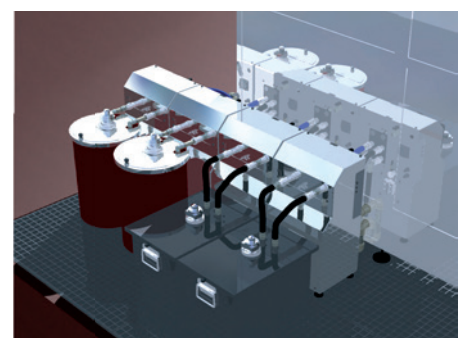
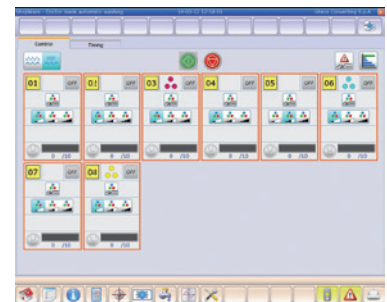


CI Drum Cleaning.

The CI drum cleaning device can be easily extracted for insert replacement

SprintWash®

The CRYSTAL is equipped with Uteco automatic and modular washing system. Three different washing cycles can be selected by the operator on the HMI, according to the next color change. The **SprintWash®** can be designed according to the customer needs: use of solvent based, water based inks or both types.



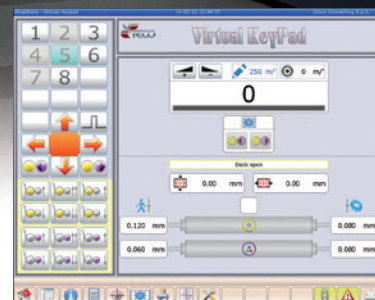
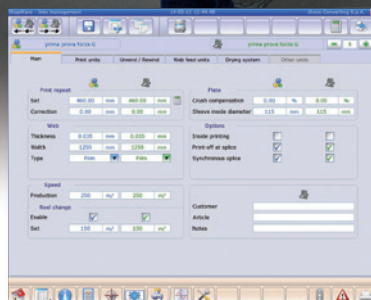
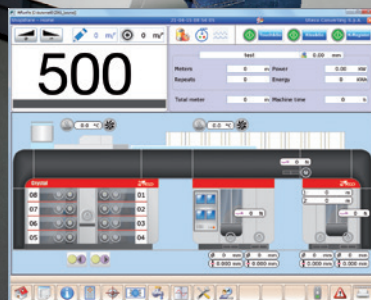
Crystal ShopWare®

The new designed HMI has been improved with additional features and controls. With the touch screen the operator can access to a multi-page color display in order to operate the press and to have control of the different parameters related to printing.

The different screens give access to:

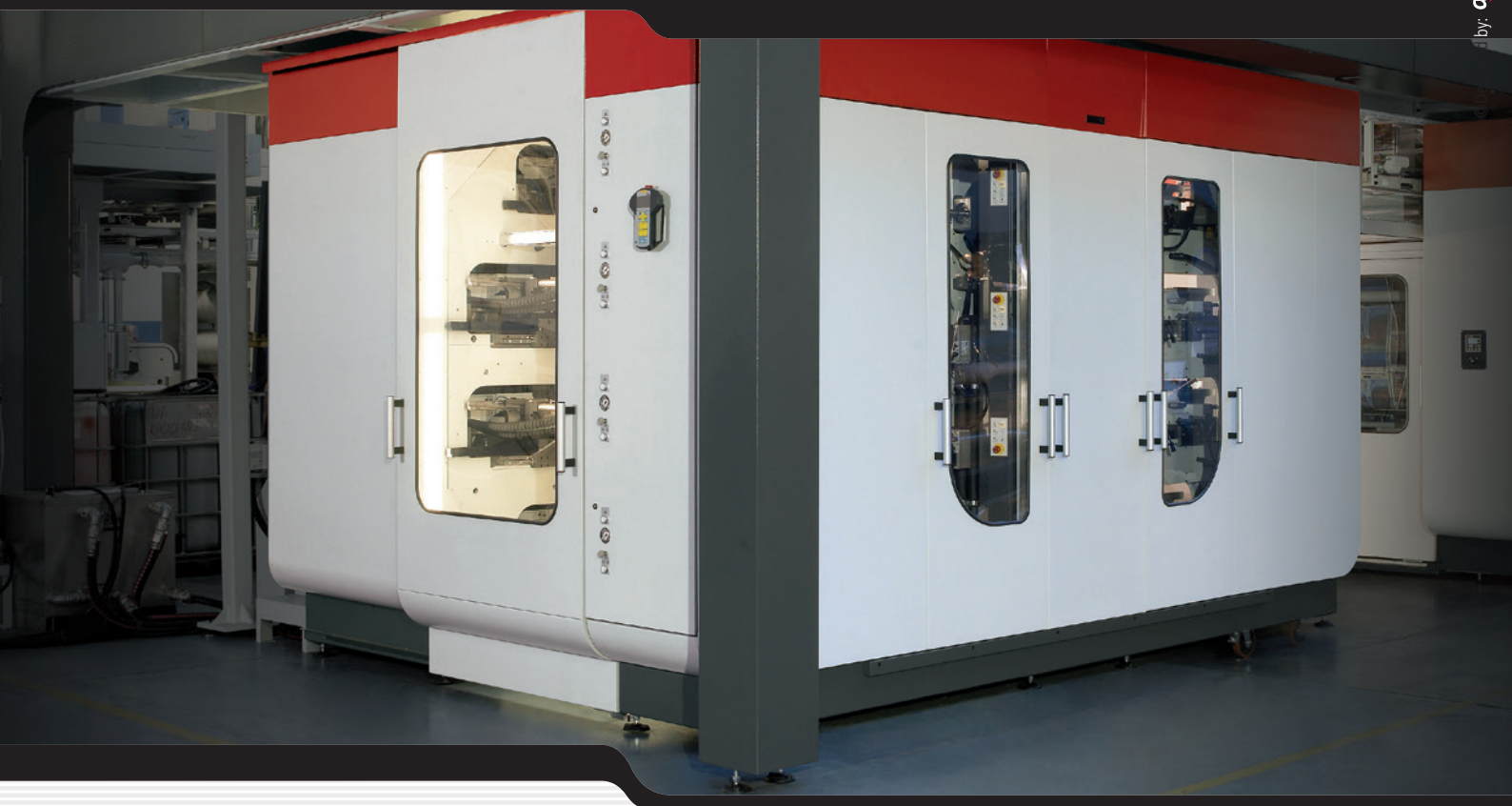
- the entire press configuration with indication/setting of temperatures, tensions, speed, and to the **Touch&Go®** and **Kiss&Go®**
- the page showing the printing group with indication of the decks on printing mode and the command to go in or out of impression
- the pages related to the receipts/job numbers where all the data related to any job can be set and stored in the memory (over 5.000 receipts can be stored)
- the page of the **SprintWash®** with selection of the decks to be washed, the tipe of washing and an indication of the washing cycle status
- the page showing the register accuracy (side and running) during the run
- the page of the trends as well as the maintenance/diagnostics/alarms
- the page showing press productivity by shift/day/month/year.

The Press can be connected in remote for troubleshooting purpose by our Service technicians.



Air blades removal in the drying tunnel for an easy cleaning





TECHNICAL CHARACTERISTICS		CRYSTAL RANGE	
MODELS		808	108
Max. Print Width	mm	800 ÷ 1600	800 ÷ 1600
Min. Print Repeat	mm	290 ÷ 440	290 ÷ 440
Max. Print Repeat	mm	850	850
Printing Speed	m/min	500	500
Substrate tension range	kg	2 ÷ 40	2 ÷ 40
Inks		Solvent or water based, UV/EB	

